

ENHANCED PRODUCTIVITY THROUGH ADVANCED ENGINEERING

# SPECIAL PROMOTIONS

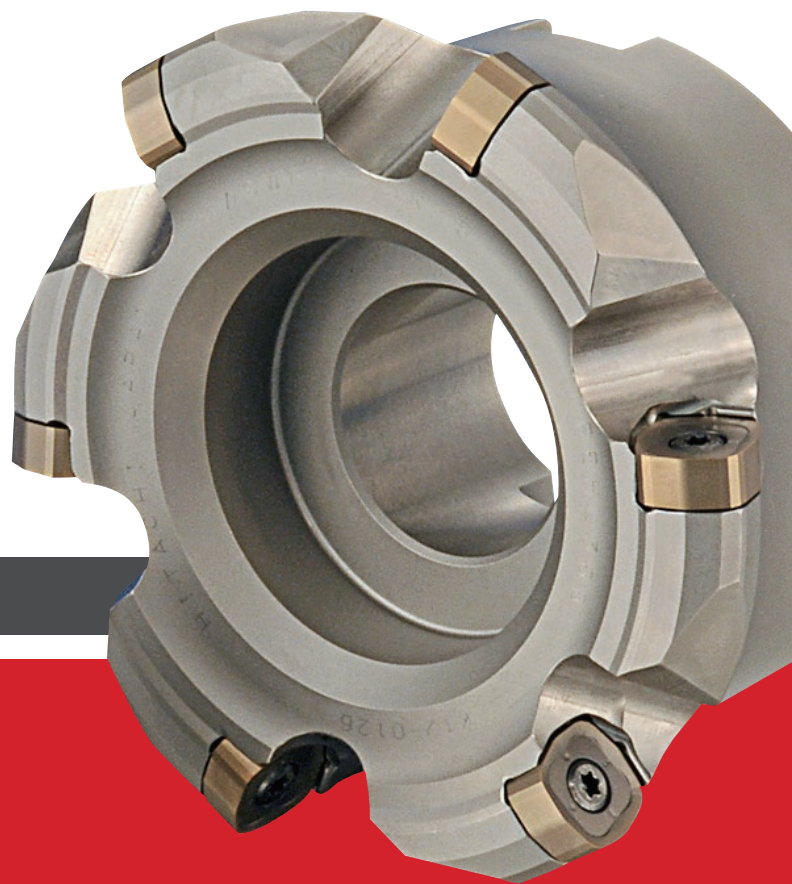
– 1 cutter and corresponding inserts at discounted price.

## IASDF

Face Mills Ideal for  
High-Feed Rate Machining



FACE MILL  
STYLE



### FEATURES

Inserts feature front/ back eight-corner design

One insert size fits all face mills from 2.5" to 6.0"

7mm thick inserts reduce breakage problems

Multiple insert coatings available for working in a wide range of materials

# IASDF

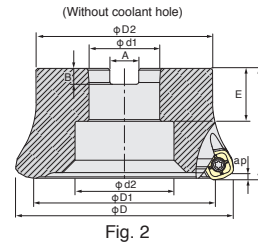
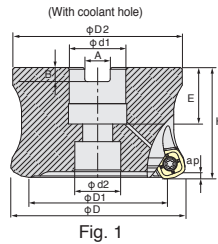
## Face Mill Style Inch



**50**  
HRC-20



Max ap  
3mm (0.118")



D -0.15/-0.25

### IASDF-Inch (Face Mill Style)

Part No.	Flutes	ØD	ØD1	H	Ød1	Ød2	ØD2	E	A	B	Fig	Insert
IASDF5040R-4U	4	2.5	1.690	1.969	0.75	0.630	2.362	1.024	0.32	0.197	1	SNMU1607EN-x
IASDF5048R-4U	4	3.0	2.191	2.480	1.00	0.827	2.756	1.378	0.38	0.236	1	SNMU1607EN-x
IASDF5064R-5U	5	4.0	3.190	2.756	1.50	1.240	3.543	1.378	0.63	0.394	1	SNMU1607EN-x
IASDF5080R-6U	6	5.0	4.191	2.756	1.50	1.969	3.937	1.378	0.63	0.394	2	SNMU1607EN-x
IASDF5096R-8U	8	6.0	5.192	2.756	1.50	2.165	4.134	1.378	0.63	0.394	2	SNMU1607EN-x

\* Screw anti-seizure agent is not included (sold separately)

Part No.	Clamp Screw	Wrench	Wrench	Screw Anti-Seizure Agent
IASDF5○○○R-○	 555-141	 105-T20	 105-T20L Dia. 6"	 P-37

# IASDF

# Inserts



Fig. 1 C Breaker

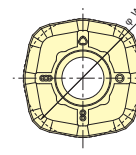
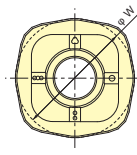


Fig. 2 B Breaker

### Inserts

Part No.	JP4120	JM4160	JP4020	JS4045	GX2120	ØW(mm)	T(mm)	Fig
SNMU1607EN-C			•	•		16	7	1
SNMU1607EN-B	•	•		•	•	16	7	2

### COATING MATERIALS FOR INSERTS

Material name ISO Classification	Coating Name Coating Type	Application	Features
<b>JP4020</b> P10-M10-K10	<b>JP Coating</b> PVD	For pre-hardened steel (40-50HRC)	Uses coating with excellent shock resistance, making it superior for cutting prehardened steel.
<b>JP4120</b> P10-M10-K10	<b>AJ Coating</b> PVD	For pre-hardened steel (35-50HRC) and alloy steel	Uses fine grain substrate and AJ coating. Suitable for cutting of common steels through pre-hardened steels.
<b>JS4045</b> P30-K30	<b>JS Coating</b> PVD	General purpose for steel	Uses rough grain substrate and JS coating Suitable for general steel cutting
<b>GX2120</b> K10	<b>GX Coating</b> CVD	For high-speed cutting of cast iron	Uses fine grain substrate and GX coating Suitable for the continuous cutting of cast iron.
<b>JM4160</b> M40	<b>AJ Coating</b> PVD	General purpose for stainless steel	Uses high toughness substrate and AJ coating. Suitable for cutting of stainless steels.

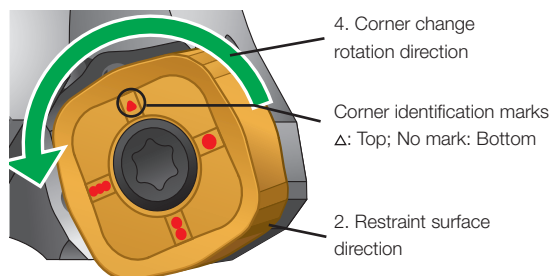
### BREAKER SHAPES

B breaker for lower cutting force is now available.

- Positive edge geometry realizes 10% lower cutting force than before.
- B breaker has better performance in less rigidity set-up.

<b>C Breaker</b>	SNMU1607EN-C			<ul style="list-style-type: none"> <li>• Suitable for general machining in steels</li> <li>• Interrupted machining</li> </ul>
<b>B Breaker</b>	SNMU1607EN-B			<ul style="list-style-type: none"> <li>• Machining with less rigidity set-up</li> <li>• Parts-making in less rigidity cramping</li> <li>• Suitable for stainless steel machining</li> </ul>

### Insert Replacement Procedure



1. Clean the place where the insert will be attached so that there are no foreign materials such as cutting chip stuck on.
2. Apply anti-seizure agent to the thread portion of the clamp screw, and while pressing the insert against the restraint surface, tighten the screw to the appropriate torque. (Recommended tightening torque: 4.9Nm)
3. After tightening, check that there are no gaps between the insert and the base or the restraint surface.
4. Change the insert corner by turning the insert in a counterclockwise direction.

**ENHANCED PRODUCTIVITY THROUGH ADVANCED ENGINEERING**
**PROMOTION DETAILS**

- Orders to Detroit Customer Service  
**email: Ht-orders@mmus.com**  
**or Fax: 248-308-2627**
- Each selected kit includes one cutter body, wrench and ten inserts
- Special KIT EDP number onto separate purchase orders and include  
**Promo Code: PromoIASDF KIT**
- Promotion includes standard IASDF stock cutter listed in this promotion flyer, while quantities last
- All sales are final with no returns and no blanket orders
- Contact your local Mitsubishi Materials District Sales Manager for additional details
- For additional information about Mitsubishi Hitachi Tool Engineering products please visit [www.mmc-hitachitool.co.jp/en-US](http://www.mmc-hitachitool.co.jp/en-US)
- Promotion period:**  
October 1, 2017 - October 31, 2017

KIT EDP	KIT Part No.	Cutter Dia.	Cutter Body Part #	Insert Part#	Kit MSRP*
<b>62064699</b>	KIT-IASDF5040R-4U-1	2.5"	IASDF5040R-4U	SNMU1607EN-B JP4120	\$515.33
<b>62064705</b>	KIT-IASDF5048R-4U-1	3"	IASDF5048R-4U	SNMU1607EN-B JP4120	\$553.39
<b>62064712</b>	KIT-IASDF5064R-5U-1	4"	IASDF5064R-5U	SNMU1607EN-B JP4120	\$656.95
<b>62064729</b>	KIT-IASDF5080R-6U-1	5"	IASDF5080R-6U	SNMU1607EN-B JP4120	\$787.89
<b>62064736</b>	KIT-IASDF5096R-8U-1	6"	IASDF5096R-8U	SNMU1607EN-B JP4120	\$1,007.15
<b>62064743</b>	KIT-IASDF5040R-4U-2	2.5"	IASDF5040R-4U	SNMU1607EN-B JM4160	\$515.33
<b>62064750</b>	KIT-IASDF5048R-4U-2	3"	IASDF5048R-4U	SNMU1607EN-B JM4160	\$553.39
<b>62064767</b>	KIT-IASDF5064R-5U-2	4"	IASDF5064R-5U	SNMU1607EN-B JM4160	\$656.95
<b>62064774</b>	KIT-IASDF5080R-6U-2	5"	IASDF5080R-6U	SNMU1607EN-B JM4160	\$787.89
<b>62064781</b>	KIT-IASDF5096R-8U-2	6"	IASDF5096R-8U	SNMU1607EN-B JM4160	\$1,007.15
<b>62064798</b>	KIT-IASDF5040R-4U-3	2.5"	IASDF5040R-4U	SNMU1607EN-B JS4045	\$515.33
<b>62064804</b>	KIT-IASDF5048R-4U-3	3"	IASDF5048R-4U	SNMU1607EN-B JS4045	\$553.39
<b>62064811</b>	KIT-IASDF5064R-5U-3	4"	IASDF5064R-5U	SNMU1607EN-B JS4045	\$656.95
<b>62064828</b>	KIT-IASDF5080R-6U-3	5"	IASDF5080R-6U	SNMU1607EN-B JS4045	\$787.89
<b>62064835</b>	KIT-IASDF5096R-8U-3	6"	IASDF5096R-8U	SNMU1607EN-B JS4045	\$1,007.15
<b>62064842</b>	KIT-IASDF5040R-4U-4	2.5"	IASDF5040R-4U	SNMU1607EN-C JP4020	\$515.33
<b>62064859</b>	KIT-IASDF5048R-4U-4	3"	IASDF5048R-4U	SNMU1607EN-C JP4020	\$553.39
<b>62064866</b>	KIT-IASDF5064R-5U-4	4"	IASDF5064R-5U	SNMU1607EN-C JP4020	\$656.95
<b>62064873</b>	KIT-IASDF5080R-6U-4	5"	IASDF5080R-6U	SNMU1607EN-C JP4020	\$787.89
<b>62064880</b>	KIT-IASDF5096R-8U-4	6"	IASDF5096R-8U	SNMU1607EN-C JP4020	\$1,007.15
<b>62064897</b>	KIT-IASDF5040R-4U-5	2.5"	IASDF5040R-4U	SNMU1607EN-C JS4045	\$515.33
<b>62064903</b>	KIT-IASDF5048R-4U-5	3"	IASDF5048R-4U	SNMU1607EN-C JS4045	\$553.39
<b>62064910</b>	KIT-IASDF5064R-5U-5	4"	IASDF5064R-5U	SNMU1607EN-C JS4045	\$656.95
<b>62064927</b>	KIT-IASDF5080R-6U-5	5"	IASDF5080R-6U	SNMU1607EN-C JS4045	\$787.89
<b>62064934</b>	KIT-IASDF5096R-8U-5	6"	IASDF5096R-8U	SNMU1607EN-C JS4045	\$1,007.15
<b>62064941</b>	KIT-IASDF5040R-4U-6	2.5"	IASDF5040R-4U	SNMU1607EN-C GX2120	\$515.33
<b>62064958</b>	KIT-IASDF5048R-4U-6	3"	IASDF5048R-4U	SNMU1607EN-C GX2120	\$553.39
<b>62064965</b>	KIT-IASDF5064R-5U-6	4"	IASDF5064R-5U	SNMU1607EN-C GX2120	\$656.95
<b>62064972</b>	KIT-IASDF5080R-6U-6	5"	IASDF5080R-6U	SNMU1607EN-C GX2120	\$787.89
<b>62064989</b>	KIT-IASDF5096R-8U-6	6"	IASDF5096R-8U	SNMU1607EN-C GX2120	\$1,007.15

\* KIT MSRP: KIT Manufacture Suggested Retail Price

**DISTRIBUTED BY:**
**Customer Service for Mitsubishi Hitachi Tool Engineering, Ltd. Products**

41700 Gardenbrook Road, Suite 120  
Novi, MI 48375, USA  
Tel: 248 308 2620  
Fax: 248 308 2627  
Email: [rfqHTdiv@mmus.com](mailto:rfqHTdiv@mmus.com)

**Los Angeles Head Office**

11250 Slater Avenue  
Fountain Valley, CA 92708, USA  
Tel: 714 352 6100  
Fax: 714 352 6190

[www.mmc-hitachitool.co.jp/en-US](http://www.mmc-hitachitool.co.jp/en-US)